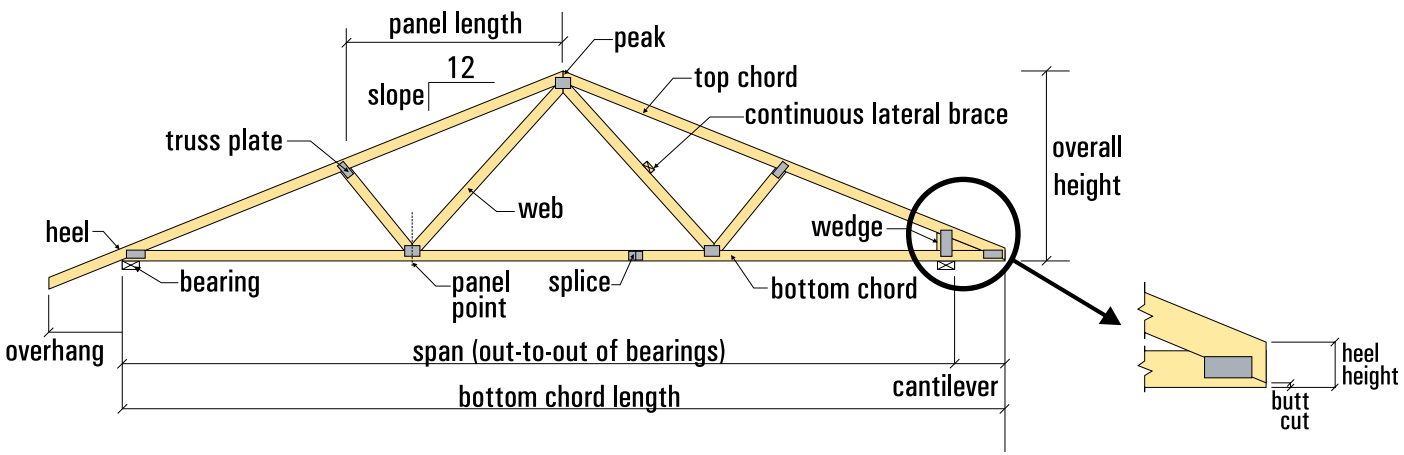




### Truss Configurations

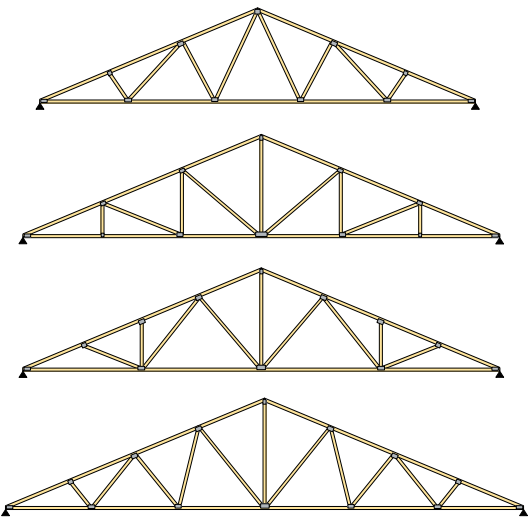
**TRUSS TERMS:** The terms below are typically used to describe the various parts of a metal plate connected wood truss. The truss profile, span, heel height, overall height, overhang and web configuration depend on the specific design conditions and will vary by application.



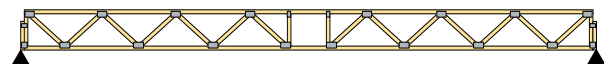
**TWO BASIC TYPES OF TRUSSES:** The pitched or common truss is characterized by its triangular shape. It is most often used for roof construction. Some common trusses are named according to their web configuration, such as the King Post, Fan, Fink or Howe truss. The chord size and web configuration are determined by span, load, and spacing. All truss designs are optimized to provide the most economical application.

The parallel chord or flat truss gets its name from having parallel top and bottom chords. This type is often used for floor construction.

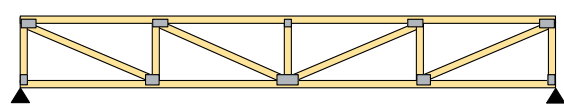
#### STANDARD ROOF TRUSS CONFIGURATIONS



#### PARALLEL CHORD

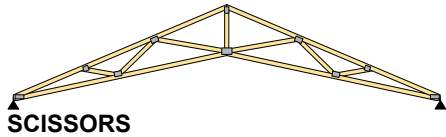


4x2 FLOOR TRUSS WITH CHASE

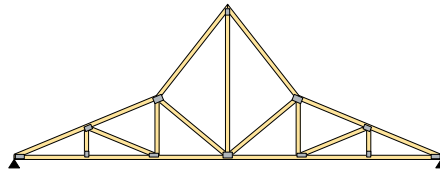


2x4 FLOOR OR ROOF TRUSS (CAN DESIGN WITH A CHASE AS WELL)

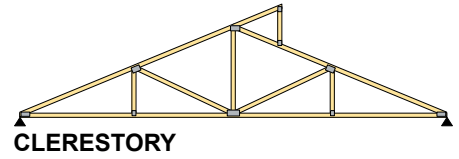
**TRUSS CONFIGURATIONS:** The following examples represent some of the possible variations on the basic types of trusses. The only limit to the design is your imagination!



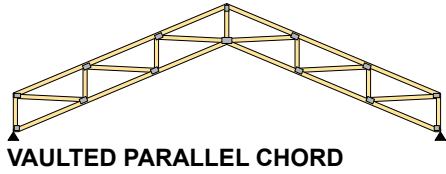
**SCISSORS**



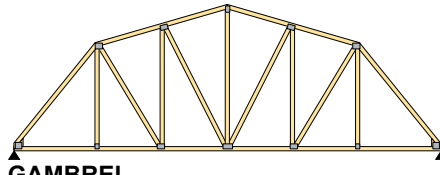
**POLYNESIAN**



**CLERESTORY**



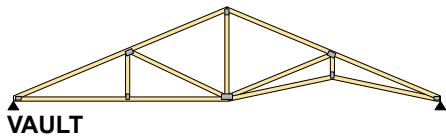
**VAULTED PARALLEL CHORD**



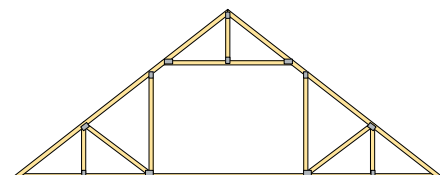
**GAMBREL**



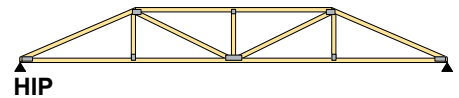
**CANTILEVERED MANSARD W/PARAPETS**



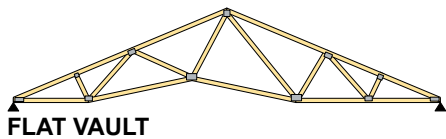
**VAULT**



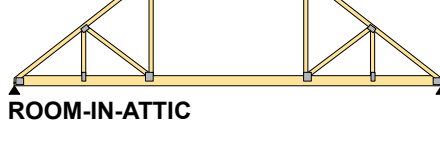
**ROOM-IN-ATTIC**



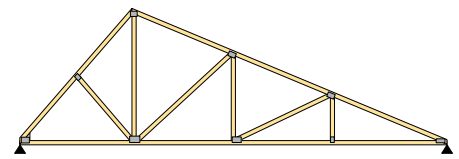
**HIP**



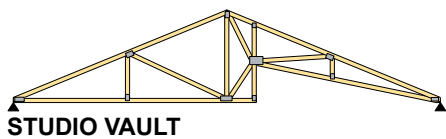
**FLAT VAULT**



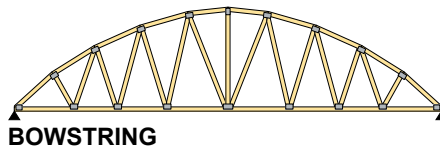
**BOWSTRING**



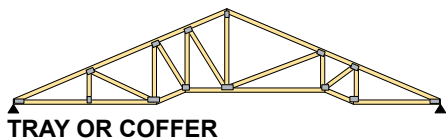
**DUAL PITCH**



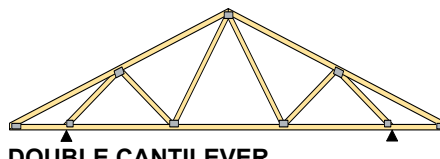
**STUDIO VAULT**



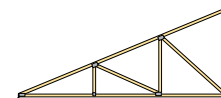
**MONO**



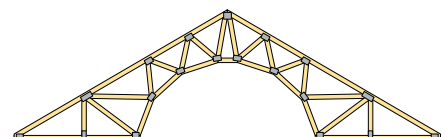
**TRAY OR COFFER**



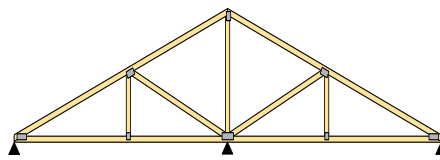
**DOUBLE CANTILEVER**



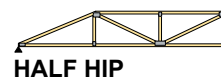
**HALF SCISSORS**



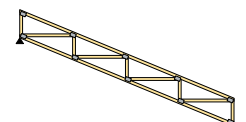
**BARREL VAULT**



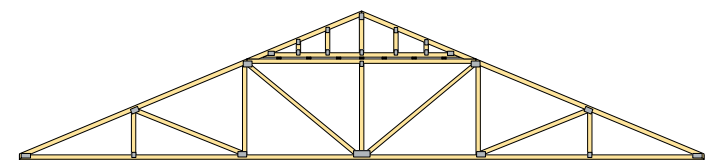
**TRI-BEARING**



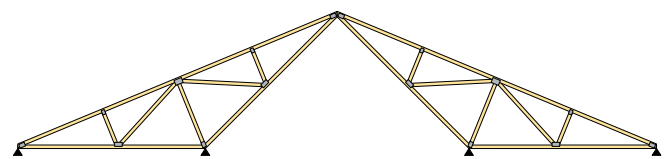
**HALF HIP**



**SLOPING FLAT**



**MULTI-PIECE**



**DOUBLE INVERTED**

**WTCA – Representing the Structural Building Components Industry**

6300 Enterprise Lane • Madison, WI 53719  
 608/274-4849 • 608/274-3329 fax  
 www.sbcindustry.com • wtca@sbcindustry.com

**Truss Technology in Building**

An informational series designed to address the issues and questions faced by professionals in the building construction process.

## **Disclaimer**

This copyrighted document is a secure PDF, and while it can be opened, saved and emailed, it cannot be printed. To order copies or receive a complimentary hard copy, contact WTCA at 608/274-4849.